



PT. SHIBA HIDROLIK PRATAMA

Manufacture of Cylinder Hydraulic & Pneumatic



PRODUCT CATALOG



sales@shibahidrolikpratama.com
shiba_pratama@yahoo.co.id



+62821-5579-1334
+62821-5573-3566

www.shibahidrolikpratama.com

ABOUT SHIBA

Shiba adalah perusahaan di bidang manufaktur dan layanan komponen hidrolik & pneumatik. Dikenal karena fasilitas produksi kami yang canggih, termasuk mesin CNC dan peralatan workshop lengkap, kami mengutamakan kualitas dan presisi dalam setiap produk yang dihasilkan.

Didukung oleh tim profesional berpengalaman dengan keahlian mendalam di bidang teknik, kami berkomitmen untuk memenuhi setiap pesanan sesuai dengan spesifikasi dan kebutuhan pelanggan. Kepuasan pelanggan adalah prioritas utama kami, dan kami berusaha memberikan produk serta layanan terbaik untuk mencapainya.





VISI

Mengembangkan industri permesinan dengan teknologi dan manajemen manufaktur modern sehingga menghasilkan produk yang berkualitas tinggi, harga yang kompetitif, dan ketepatan waktu pengiriman.

MISI

Menjalin kemitraan untuk kesejahteraan dan kesuksesan usaha bersama.



PRODUCT CATALOG



+62821-5579-1334
+62821-5573-3566

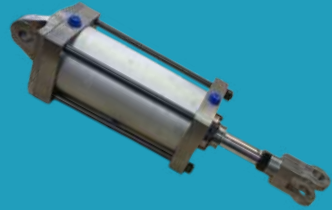


shiba_pratama@yahoo.co.id
sales@shibahidrolikpratama.com

CYLINDER



Cylinder Hydraulic



Cylinder Pneumatic



Cylinder Hydraulic



Cylinder Hydraulic



Cylinder Hydraulic



Cylinder Hydraulic

CYLINDER



Cylinder Hydraulic



Cylinder Hydraulic



Jack Shiba Lift



Telescopic Jack



Cylinder Shiba Lift

POWER PACK



Power Pack



Minipack



Power Pack



Portable Pump



Power Pack



Portable Punching



Power Pack

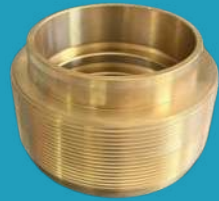
ACCESSORIES



Flange Mount



Sprocket



Brass Expansion



Cover Hydraulic



Piston Seal Compact Type ZW Parker



Piston Hydraulic



Rod Seal & Dust Seal Hallite



Pin



Suction Filter



Clevis



Piston Seal Compact Type Hallite

ACCESSORIES



Hydraulic Pump



Level Gauge Hydraulic



Gear Pump



Flow Control Hydraulic



Gear Pump



Hydraulic Tank Filter Cover



Hydraulic Punching



Puller



Double Pilot Check Valve



Pressure Gauge

MATERIAL SPECIFICATION



HONED SEAMLESS TUBE

PRODUCT CHARACTERISTIC

High quality, cold drawn, high strength carbon tube, the internal diameter is grinded with precision machinery.

PRODUCT SPECIFICATION

1. Material Grade:

JIS STKM13A, STKM13C, DIN St52, SAE 1020

2. Internal Diameter Accuracy:

ISO H9,H7/H8 Upon Request

3. Internal Diameter Roughness:

0,8 s - 3 s

4. Tolerance of Wall Thickness:

± 7%



SUJ2 INDUCTION HARDEN HARD CHROME PLATED STEEL BAR

PRODUCT CHARACTERISTIC

The material composition of carbon and Cr-alloy is impact—and abrasion—proof, pliable but strong. It is stable and deforms less after heat treatment. The accuracy can meet the international standard.

PRODUCT SPECIFICATION

1. Material Grade :

JIS SUJ2, SAE52100, DIN CK100Cr6.

2. Application :

Piston rod for hydraulic / pneumatic cylinder.
Guide rod for linear motion, bearing, column, sliding shaft, automatic machinery, injection molding machine, pillar and bar for machinery. The applications are extensive, especially in bearing purpose.

3. Replaceable Products :

SUJ 2 grinding steel bar, SUJ 2 induction harden grinding steel bar, SUJ 2 hard chrome plated steel bar

4. Thickness of Hard Chrome Layer :

20 Micron Up



5. Hardness of Hard Chrome

Layer :

HV 800 Up

6. Case Depth :

1.5 mm - 2.5 mm

7. Hardness of Induction Harden :

HRC62 ± 2

8. Surface Roughness :

Ry0.61.4s Ra 0.2µm0.4µm

9. External Diameter Accuracy :

g6. h6, h7. f7. h8, f8

MATERIAL SPECIFICATION



S45C HARD CHROME PLATED STEEL BAR

PRODUCT CHARACTERISTIC

The bar is processed with precision center-less grinding and hard chrome plating which is abrasion proof and corrosion proof. The accuracy meets the international standard.

PRODUCT SPECIFICATION

1. Material Grade:

JIS S45C, SAE 1045, DIN Ck45

2. Application :

Piston rods for hydraulic/pneumatic cylinder. Guide rod for linear motion, sliding shaft, column, automatic machinery, injection molding machine, pillar, and bar for machinery.

3. Replaceable Products :

S45C induction harden hard chrome plated steel bar, S45C grinding steel bar, plated steel bar.

4. Thickness of Hard Chrome Layer :

20 Micron Up

5. Hardness of Hard Chrome Layer :

HV 800 Up

6. Surface Roughness :

Ra 0.61.4s Ra 0.2µm0.4µm

7. External Diameter Accuracy :

H7. f7. h8, f8

8. Standard Size :

6 Ø - 200 Ø

9. Standard Length for mass Production :

3000 mm - 6000mm

10. Special length, specification, accuracy and process can be acceptable for customization.

SEALS



Bosak+Shamban



Hallite



simrit®

simrit®



SAKAGAMI
TECHNOLOGY & SEALING SYSTEM

☎ 總 販 上 舉 仕 所

Parker
O-Rings & Seals



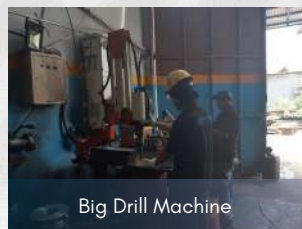
APPLICATION



WORKSHOP



Headquarter



Big Drill Machine



Argon Welding Machine



Conventional Lathe Machine



Conventional Milling Machine



CNC Lathe Machine (OKUMA)



Big Drill Machine



Workshop



Large Lathe Machine



Cutting Machine



CNC Milling Machine



Welding Machine



Start your journey to optimal hydraulic system performance.

Every one of our products is the result of
expertise and innovation in the field of
hydraulics.

www.shibahidrolikpratama.com